

Industrial Pressure Transducers

Description

XDB303 series of pressure transducers utilize ceramic pressure sensor core, ensuring exceptional reliability and long-term stability. With economical aluminum shell structure and multiple signal output options, they are widely used in various industries and fields.

Features

- ◆ Low cost & economical solutions
- ◆ All aluminum structure & compact size
- ◆ Complete surge voltage protection function
- ◆ Short circuit and reverse polarity protection
- ◆ Provide OEM, flexible customization

Typical applications

- ◆ Intelligent IoT constant pressure water supply
- ◆ Energy and water treatment systems
- ◆ Medical, agricultural machinery and testing equipment
- ◆ Hydraulic and pneumatic control systems
- ◆ Air-conditioning unit and refrigeration equipment
- ◆ Water pump and air compressor pressure monitoring

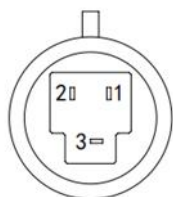


Parameters

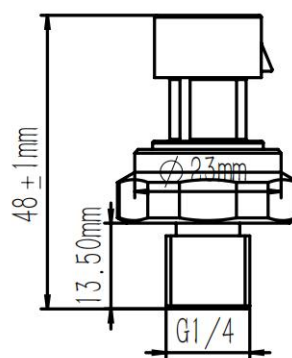
Pressure range	-1~12 bar	Accuracy	$\pm 1.0\% \text{ FS}@25^\circ\text{C}$ ($\leq \pm 2.0\% \text{ FS}$ max $-20\sim 80^\circ\text{C}$)
Input voltage	DC 5V, 12V, 3.3V, 9-36V	Long-term stability	$\leq \pm 0.2\% \text{ FS/year}$
Output signal	0.5~4.5V / 1~5V / 0~5V / I ² C (others)	Response time	$\leq 4\text{ms}$
Thread	G1/4	Overload pressure	150% FS
Electrical connector	Packard / Direct plastic cable	Burst pressure	300% FS
Insulation resistance	$> 100 \text{ M}\Omega$ at 500V	Cycle life	500,000 times
Operating temperature	$-40 \sim 105^\circ\text{C}$	Housing material	Aluminum shell
Compensation temperature	$-20 \sim 80^\circ\text{C}$	Sensor material	96% Al_2O_3
Operating current	$\leq 3\text{mA}$	Protection class	IP65
Temperature drift (zero&sensitivity)	$\leq \pm 0.03\% \text{ FS}/^\circ\text{C}$	Weight	$\approx 0.08\text{kg}$

Dimensions(mm) & electrical connection

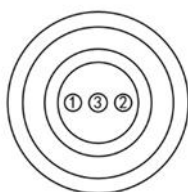
Packard



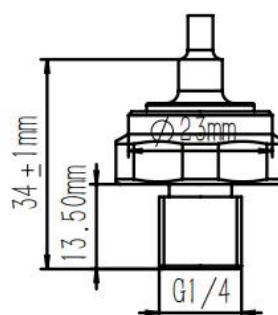
RED: +SUPPLY①
BLACK: GND②
YELLOW: OUTPUT+③



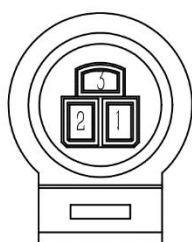
Direct plastic cable



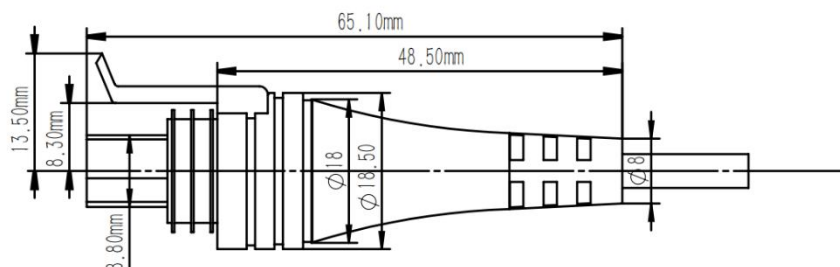
RED: +SUPPLY①
BLACK: GND②
YELLOW: OUTPUT+③



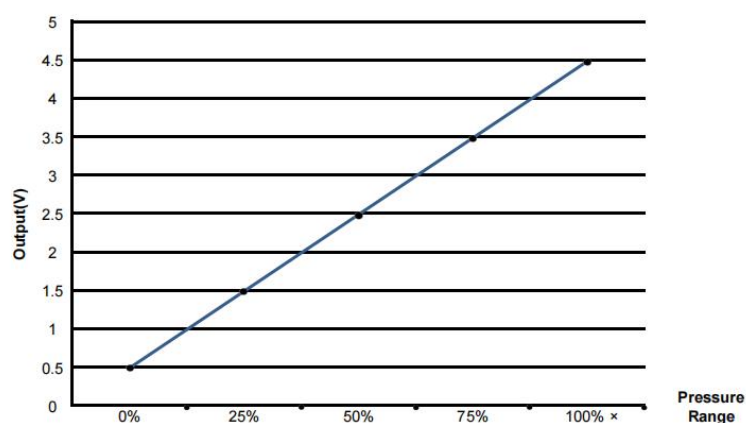
Packard Plug cable



RED: +SUPPLY①
BLACK: GND②
YELLOW: OUTPUT+③



Output Curve (5±0.25V)



How to order


E.g. **XDB303 - 150P - 01 - 0 - C - G1 - W2 - c - 01 - Oil**


1	Pressure range	150P
	M(Mpa) B(Bar) P(Psi) X(Others on request)	
2	Pressure type	01
	01(Gauge) 02(Absolute)	
3	Supply voltage	0
	0(5VDC) 1(12VDC) 2(9~36(24)VDC) 3(3.3VDC) X(Others on request)	
4	Output signal	C
	B(0-5V) C(0.5-4.5V) E(0.4-2.4V) F(1-5V) G(I ² C) X(Others on request)	
5	Pressure connection	G1
	G1(G1/4) X(Others on request)	
6	Electrical connection	W2
	W2(Packard) W7(Direct plastic cable) X(Others on request)	
7	Accuracy	c
	c(1.0% FS) d(1.5% FS) X(Others on request)	
8	Paired cable	01
	01(0.3m) 02(0.5m) 03(1m) X(Others on request)	
9	Pressure medium	Oil
	X(Please note)	


Notes:

- 1) Please connect the pressure transducer to the opposite connection for different electric connector.
If the pressure transducers come with cable, please refer to the right color.
- 2) If you have other requirements, please contact us and make notes in the order.

 #98 Rongyang Rd, Songjiang, SH, 201613, CHINA

 +86 19921910756

 www.xdbsensor.com

 +86 021 37623075

 info@xdbsensor.com

 Xidibei Sensor & Control